

## Pharmacy Residency Preceptors 2017-2018



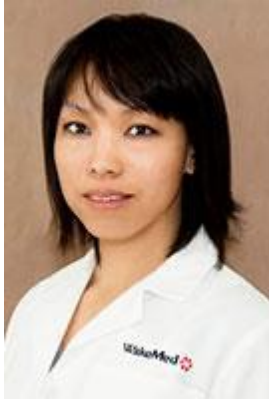
**Janna Beavers, PharmD, BCPS**, is the current Cardiology Clinical Specialist at WakeMed. Janna is a graduate of Campbell University College of Pharmacy & Health Sciences. She completed her PGY1 Pharmacy Practice and PGY2 Cardiology residencies at WakeMed. Janna precepts PGY1 and PGY2 residents and offers rotations in general cardiology, heart failure, transitions of care, and anticoagulation. Janna is an active member of the American College of Clinical Pharmacy (ACCP) and the North Carolina Association of Pharmacists (NCAP), where she is a member on the executive committee for the New Practitioner Network. Janna completed a teaching certificate program through UNC Eshelman School of Pharmacy during her PGY2 residency and is a clinical adjunct faculty member with Campbell University. In addition, Janna currently serves as co-course coordinator for the Cardiology Elective and lectures in the elective and therapeutics course at Campbell University. Her research interests include aPTT versus anti-Xa monitoring for heparin infusions, implementation and evaluation of transitions of care pharmacy services, and optimization of acute and chronic heart failure pharmacotherapy regimens.

---



**Amanda Burgin, PharmD, BCPS, BCCCP**, is one of the current Clinical Staff Pharmacists at WakeMed Health and Hospitals, primarily staffing in the Medical, Surgical Trauma, and Neuro Critical Care Units. She attended the University of North Carolina at Chapel Hill for her undergraduate training, where she received a Bachelor of Science in Pharmaceutical Sciences. She then graduated with her Doctor of Pharmacy degree from the UNC Eshelman School of Pharmacy. Following this, Amanda completed an American Society of Health System Pharmacists (ASHP) Accredited Pharmacy Practice Residency at New Hanover Regional Medical Center in Wilmington, North Carolina where she focused her research and rotations in critical care. She currently serves as a preceptor for students from the UNC Eshelman School of Pharmacy and Campbell University as well as PGY1 and PGY2 residents at WakeMed. She is a member of the American College of Clinical Pharmacy (ACCP) and her current professional interests include antimicrobial stewardship and pharmacist involvement in Code Blue emergencies.

---



**Kitty Cheung, PharmD, BCPS**, is the current Pharmacy Clinical Coordinator for Medicine/Surgery and Emergency Medicine at WakeMed. She obtained her Doctor of Pharmacy degree from the University of North Carolina at Chapel Hill in 2005 and completed a Pharmacy Practice Residency at the Durham VA Medical Center in North Carolina. Kitty joined WakeMed in 2006 as a clinical staff pharmacist, before going on to accept a Pharmacy Clinical Coordinator position. Additionally, Kitty assumed the position of Pharmacist Educator for the department in August 2013 and is responsible in orientation of new pharmacists, pharmacy residents, and pharmacy students at WakeMed.



**Mary Covington Coleman, PharmD, BCPS**, is the current Pharmacy Clinical Specialist for Women and Children Services. She received her Bachelor of Science Degree in Biology and graduated with honors from Meredith College. She continued her education at Campbell University College of Pharmacy and Health Sciences where she obtained a Doctor of Pharmacy degree and also graduated with honors. She later completed her Pharmacy Practice and Pediatric Specialty residencies at Augusta University Medical Center (formally known as MCG Health System) and University of Georgia School of Pharmacy in Augusta, GA. At WakeMed, she serves as pharmacy liaison for several committees including NICU CQI, Pediatric CQI, and the Pediatric Systemwide Committee. She serves as a preceptor for students and residents in the general pediatrics, PICU and NICU rotations. Mary Covington is currently working on developing pediatric code blue training for the clinical staff pharmacists and implementing standard work initiatives for the pediatric staff pharmacists. Her professional areas of interest are pediatric critical care, pediatric emergency medicine and pediatric infectious disease.

---



**Mollie Grant, PharmD, BCPS, BCCCP**, is the current Critical Care Clinical Specialist at WakeMed. She is a graduate of the University of North Carolina Eshelman School of Pharmacy. She completed her PGY1 Pharmacy Practice Residency and PGY2 Critical Care Specialty Residency at WakeMed Health & Hospitals. Throughout her residencies, she completed the Teaching Certificate Program and served as an adjunctive clinical instructor at the UNC Eshelman School of Pharmacy, teaching in the Pharmaceutical Care Lab course and the Acute Care elective. Her residency research focused on antimicrobial stewardship and the use of ICU sedatives. Her current areas of interest include antimicrobial stewardship, management of acute withdrawal syndromes, and neurocritical care. She currently serves as a preceptor for WakeMed pharmacy residents and students from UNC and Campbell schools of Pharmacy. She also serves as the Residency Coordinator for the PGY1 Pharmacy Practice Residency program. Mollie is a member of the American Society of Health-System Pharmacists (ASHP), North Carolina Association of Pharmacists (NCAP), the American College of Clinical Pharmacy (ACCP), and the Society of Critical Care Medicine (SCCM).



**Shannon Holt, PharmD, BCPS AQ-ID**, is the current PGY1 Pharmacy Practice Residency Program Director, as well as the Infectious Disease Clinical Pharmacy Specialist at WakeMed. Shannon is also an Assistant Professor of Clinical Education at the UNC Eshelman School of Pharmacy and serves as a preceptor for both students and residents. She is a graduate of the UNC Eshelman School of Pharmacy, completed a PGY1 Pharmacy Practice Residency at Duke University Hospital, and a PGY2 Specialty Residency in Infectious Disease/Internal Medicine/Academia with Campbell University at Duke University Hospital. Shannon also serves as the Antimicrobial Stewardship Program pharmacy chair for the health system. Her current research interests include antimicrobial stewardship, optimizing therapy for *S. aureus* and *C. difficile* infections, evaluating risk factors for antimicrobial resistance, and improving management of sepsis patients. Shannon is also a committee member for American College of Clinical Pharmacy ID PRN and the Society of Infectious Disease Pharmacists (SIDP).

---



**Frances Isenrich, PharmD, BCCCP**, is one of the current Clinical Staff Pharmacists at WakeMed Health and Hospitals, primarily staffing in the Emergency Department and the Medical, Surgical-Trauma, and Neuro Critical Care Units. Frances graduated with distinction from the University of North Carolina Eshelman School of Pharmacy. She completed a PGY1 Pharmacy Practice Residency at New Hanover Regional Medical Center in Wilmington, North Carolina. Frances serves as an Advanced Hospital and Critical Care preceptor for the UNC Eshelman School of Pharmacy. She is also a preceptor for the WakeMed PGY1 and PGY2 residency programs in the areas of medical and surgical critical care. Frances is a Code Blue responder and is trained in trauma, STEMI, and stroke response.



**Blake King, PharmD, BCPS**, is the current Medication Safety Officer for the WakeMed Health & Hospitals system and serves as the preceptor for the PGY1 Medication Safety Rotation. Blake holds a Bachelor's of Science in Pharmaceutical Sciences and a Doctor of Pharmacy degree from The University of North Carolina at Chapel Hill. He completed his PGY1 Pharmacy Practice Residency at New Hanover Regional Medical Center in Wilmington, N.C. After residency, Blake took on the role of Assistant Director of Pharmacy at New Hanover Regional Medical Center. Blake has completed the Pharmacy Leadership Academy through the American Society of Health System Pharmacy (ASHP). Blake joined WakeMed as the Manager of WakeMed North in March 2015 and transitioned to the role of Medication Safety Officer in August 2015. In this role, Blake is devoted to ensuring medication safety and compliance with regulatory standards throughout the entire WakeMed system. Blake serves as a member of the Medication Safety Section Advisory Group for ASHP and is a member of the workgroup revising the ISMP Guidelines on Standard Order Sets.

---



**Allison Landers, PharmD, BCPS**, is the current Clinical Drug Information Specialist at WakeMed Health & Hospitals. Allison received her Doctorate of Pharmacy from the University of North Carolina at Chapel Hill in 2009. She attended the University of North Carolina - Asheville for undergraduate training, where she received a Bachelor of Science in Atmospheric Science. Allison joined WakeMed in 2009 as a clinical staff pharmacist at the Cary campus. While at Cary she chaired the pharmacy Quality and Safety Committee, attended P&T and assisted with several projects. She has been a preceptor for both Campbell and University of North Carolina pharmacy students for their introductory and advanced hospital experiences. Currently Allison is pursuing her Masters in Healthcare Administration through Liberty University.



**Erin (Allender) Ledford, PharmD, BCPS-AQ Cardiology, BCCCP**, is the current Cardiology Critical Care Clinical Specialist and Director of the PGY2 Critical Care and Cardiology Residencies at WakeMed. Erin is a graduate of the University Of Kentucky College Of Pharmacy. She completed her Pharmacy Practice and Critical Care Specialty residencies at the University of North Carolina Hospitals. Throughout her residencies, Erin taught a section of the Pharmaceutical Care Lab at the University Of North Carolina Eshelman School Of Pharmacy. To date, she still teaches within the Acute Care and Critical Care Electives. Erin also serves as an instructor for both ACLS and BLS for the American Heart Association. Erin has been nominated to serve in several leadership positions within the Cardiology PRN of the American College of Clinical Pharmacy (ACCP). She is a past-President of the Triangle College of Clinical Pharmacy (TCCP) and a member of the Society of Critical Care Medicine (SCCM). Her current research focuses on the use of insulin in critically ill patients, bivalirudin for the treatment of heparin-induced thrombocytopenia, dexmedetomidine stewardship, Anti-Xa-based heparin and enoxaparin nomograms, Code Cart optimization, electrolyte replacement protocols, anticoagulation practices for percutaneous left ventricular assist devices, antithrombotic considerations for transcatheter aortic valve replacement and enhanced recovery after cardiac surgery. She is also actively involved in the identification and implementation of various initiatives to optimize patient care while promoting fiscal responsibility.

---



**Chris McGuire, PharmD, BCPS**, is the current Pharmacy Clinical Coordinator for Cardiology at WakeMed Health & Hospitals. Chris graduated from the Butler University College of Pharmacy and Health Sciences in Indianapolis, IN. He completed a PGY1 Pharmacy Practice Residency at WJB Dorn Veterans Affairs Medical Center in Columbia, SC, and was the inaugural graduate of WakeMed's PGY2 Cardiology Specialty Residency. During his Pharmacy Practice residency he completed the Academician Preparation Program through the South Carolina College of Pharmacy. After completing his residency, he practiced as a clinical staff pharmacist focusing in cardiology at WakeMed prior to obtaining his current role as a clinical coordinator. He currently serves as a preceptor for APPE general cardiology rotations for both Campbell University and UNC schools of pharmacy, and is also a preceptor for an electrophysiology rotation for Cardiology PGY2 residents at WakeMed. Chris leads topic discussions covering a variety of electrophysiology-related subjects, including atrial fibrillation management and implantable cardiac devices. Chris also serves as a Code Blue facilitator for UNC Internal Medicine resident physicians at the WakeMed Medical Simulation Lab. Chris is a member of the American College of Clinical Pharmacy (ACCP) and ACCP's Cardiology PRN.



**Chelsie Sanders, PharmD**, is one of the current Emergency Medicine Clinical Staff Pharmacists at WakeMed Health and Hospitals. Chelsie received her Doctor of Pharmacy from Campbell University College of Pharmacy and Health Sciences. She completed a PGY1 Pharmacy Practice Residency at St. Joseph's/Candler Health System in Savannah, GA and a PGY2 Emergency Medicine Pharmacy Residency at CaroMont Health in Gastonia, NC. During her PGY1 she received a teaching certificate through South University in Savannah, GA. She currently serves as the emergency medicine preceptor for PGY1 and PGY2 residents at WakeMed, as well as Campbell and UNC pharmacy students. Chelsie is a member of the American Society of Health-System Pharmacists (ASHP), the American College of Clinical Pharmacy (ACCP), the North Carolina Association of Pharmacists (NCAP), and the ACCP Emergency Medicine PRN.

---



**Marie Waddles, PharmD**, is the current Ambulatory Care Clinical Specialist at WakeMed Primary Care Clinics and an Assistant Professor of Clinical Education at UNC Eshelman School of Pharmacy. Marie serves the pharmacy school as a preceptor for ambulatory care rotations and assisting with coordinating seminar for all P4 students in the Wake region. She graduated with distinction from the UNC Eshelman School of Pharmacy in 2015. She completed her PGY1 in Ambulatory Pharmacy Practice Residency at Virginia Commonwealth University Health; followed by a PGY2 Ambulatory Care residency at The Ohio State University Wexner Medical Center. During her PGY1, she completed the Teaching and Learning Certificate program with Virginia Commonwealth School of Pharmacy. Her residency research focused on the impact of the clinical pharmacist in a 'transitions of care' clinic and the role of a clinical pharmacist in an integrated heart and vascular clinic. Marie's clinical areas of interest include diabetes, hyperlipidemia, hypertension, anticoagulation, heart failure, and population health.



**Abbie Crisp Williamson, PharmD, MHA, BCPS**, is the current Director of Pharmacy for Clinical and Operational Services. Since joining WakeMed in 2010, she has been in several positions within the Department of Pharmacy such as the Operations Manager at the Raleigh Campus and the systemwide Clinical Manager. She is a native of Raleigh, NC. She received her Doctorate of Pharmacy from the University of North Carolina at Chapel Hill Eshelman School of Pharmacy in 2004 and a Master of Healthcare Administration Program from UNC School of Public Health. She completed a Pharmacy Practice Residency and Critical Care Residency at Wake Forest University Baptist Medical Center in Winston-Salem, NC. Upon completion of residency training, Abbie worked as a surgery/perioperative pharmacist at Duke University Medical Center before transitioning into the Clinical Coordinator of Perioperative Services. Abbie is an active participant in the North Carolina Association of Pharmacists. She has served as the Chair of the NCAP New Practitioner Network, as a member of the NCAP Board of Directors, and currently serves on the Compliance Committee for the North Carolina Physicians Health Program. She lives in Raleigh with her husband, Pier, daughter Reid, and son Ben.

---

## 2017/2018 Pharmacy Residents



**Amanda Gorman, PharmD**, is one of the current **PGY1 Pharmacy Practice residents** at WakeMed. Amanda is from Raleigh, NC. She received her Bachelor of Science in Biology from the University of North Carolina at Chapel Hill in 2013 and her Doctor of Pharmacy degree from the University of North Carolina Eshelman School of Pharmacy in 2017. Her current practice interests include critical care and infectious disease. Upon completion of her PGY1 Pharmacy Practice Residency, Dr. Gorman plans to pursue a PGY2 specialty residency. In the future, Dr. Gorman plans to practice at a medical center where she will hold both clinical and teaching responsibilities.

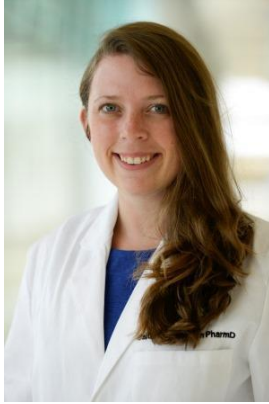
---



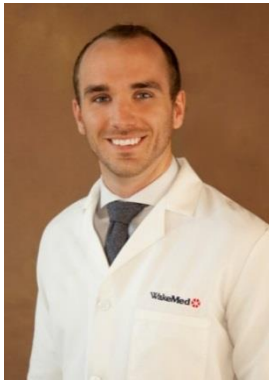
**Ethan S. Meadows, PharmD**, is one of the current **PGY1 Pharmacy Practice residents** at WakeMed. Ethan, originally from Kinston, NC received his Bachelor of Science in General Sciences with a Concentration in Clinical Research from Campbell University in 2014 and his Doctorate of Pharmacy degree from Campbell University College of Pharmacy and Health Sciences in 2017. His current practice interests include internal medicine, critical care, and emergency medicine. Upon completion of his PGY1 Pharmacy Practice Residency, Dr. Meadows plans to pursue board certification and a position at a medical center where he can practice in both a clinical and teaching capacity.

---





**Caitlin Akerman, PharmD**, is the current **PGY2 Cardiology Pharmacy resident** at WakeMed. Caitlin is from Archdale, NC, and received her Bachelor of Science in Chemistry from Appalachian State University in 2012 and her Doctor of Pharmacy from the UNC Eshelman School of Pharmacy in 2016. Her current practice interests include cardiology and ambulatory care. In the future she plans to earn board certification in pharmacotherapy and to practice in a medical center where she will hold both clinical and precepting responsibilities.



**Travis Macek, PharmD**, is the current **PGY2 Critical Care Pharmacy resident** at WakeMed. He is from Garrettsville, Ohio and received his Doctor of Pharmacy degree from Northeast Ohio Medical University (NEOMED) in 2016. He completed his PGY1 Pharmacy Practice Residency at St. Elizabeth Hospital in Youngstown, Ohio, where he conducted research involving an antimicrobial stewardship protocol for patients with *Pseudomonas aeruginosa* pneumonia. He also completed a teaching certificate program through NEOMED. His practice interests include emergency medicine and critical care, and he plans to obtain board certification in pharmacotherapy during his residency year. Upon completion of his PGY2 Critical Care Residency he plans to pursue a career in emergency medicine or critical care at an institution that has teaching and/or precepting responsibilities.

---