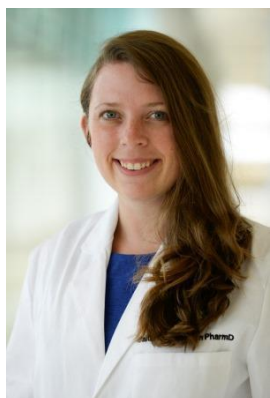


WakeMed Health & Hospitals

Pharmacy Residency Preceptors

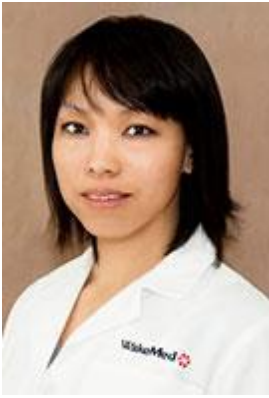
2018-2019



Caitlin Akerman, PharmD, BCPS, is the current Internal Medicine Clinical Specialist at WakeMed Health & Hospitals and an Assistant Professor of Clinical Education at the UNC Eshelman School of Pharmacy. Caitlin serves as a preceptor for both pharmacy students and residents. Caitlin graduated from the UNC Eshelman School of Pharmacy and completed a PGY1 Pharmacy Practice Residency and a PGY2 Cardiology Residency at WakeMed Health & Hospitals. She also completed a teaching certificate program through the UNC Eshelman School of Pharmacy. Her current research projects include evaluating the inpatient initiation of sacubitril/valsartan and the tolerability of heart failure medications in the very elderly population. Other areas of interest for Caitlin include anticoagulation, transitions of care, antimicrobial stewardship, and ambulatory care services.



Janna Beavers, PharmD, BCPS-AQ Cardiology, is the current Cardiology Clinical Specialist at WakeMed and the PGY2 Cardiology Residency Program Director. Janna is a graduate of Campbell University College of Pharmacy & Health Sciences. She completed her PGY1 Pharmacy Practice and PGY2 Cardiology residencies at WakeMed. Janna precepts PGY1 and PGY2 residents and offers rotations in general cardiology, heart failure, transitions of care, and anticoagulation. Janna is an active member of the American College of Clinical Pharmacy (ACCP) and the North Carolina Association of Pharmacists (NCAP), where she is a member on the executive committee for the New Practitioner Network. She is a member of several hospital multidisciplinary committees, such as the Heart Failure Task Force and Invasive Cardiology. Janna completed a teaching certificate program through UNC Eshelman School of Pharmacy during her PGY2 residency and is a clinical adjunct faculty member with Campbell University. In addition, Janna currently serves as a course coordinator for the Cardiology Elective and lectures in the elective and therapeutics course at Campbell University. Her research interests include aPTT versus anti-Xa monitoring for heparin infusions, implementation and evaluation of transitions of care pharmacy services, and optimization of acute and chronic heart failure pharmacotherapy regimens.



Kitty Cheung, PharmD, BCPS, obtained her Doctor of Pharmacy degree from the University of North Carolina at Chapel Hill in 2005 and completed a Pharmacy Practice Residency at the Durham VA Medical Center in North Carolina. Kitty joined WakeMed in 2006 as clinical staff pharmacist and is currently the Pharmacy Clinical Coordinator for the Medicine and Surgery areas. Additionally, Kitty assumed the position of Pharmacist Educator for the department in August 2013 and is responsible in orientation of new pharmacists, pharmacy residents, and pharmacy students at WakeMed.



Mary Covington Coleman, PharmD, BCPS, is the current Women & Children's Pharmacy Clinical Specialist at WakeMed. She received her Bachelor of Science Degree in Biology and graduated with honors from Meredith College. She continued her education at Campbell University College of Pharmacy and Health Sciences where she obtained a Doctor of Pharmacy degree and also graduated with honors. She later completed her Pharmacy Practice and Pediatric Specialty residencies at Augusta University Medical Center (formally known as MCG Health System) and University of Georgia School of Pharmacy in Augusta, GA. At WakeMed, she serves as pharmacy liaison for several committees including NICU CQI, Pediatric CQI, and the Pediatric Systemwide Committee. She serves as a preceptor for students and residents in the general pediatrics, PICU and NICU rotations. Mary Covington received the Pyramid Society Award which is given to WakeMed employees nominated by colleagues who go above and beyond. Her professional areas of interest are pediatric critical care, pediatric emergency medicine and pediatric infectious disease.



Mollie Grant, PharmD, BCPS, BCCCP, is a Critical Care Clinical Specialist at WakeMed. She is a graduate of the University of North Carolina Eshelman School of Pharmacy. She completed her PGY1 Pharmacy residency and PGY2 Critical Care residency at WakeMed Health & Hospitals. Throughout her residencies, she completed the Teaching Certificate Program and served as an adjunctive clinical instructor at the UNC Eshelman School of Pharmacy, teaching in the Pharmaceutical Care Lab course and the Acute Care elective. Her residency research focused on antimicrobial stewardship and the use of ICU sedatives. Her current areas of interest include antimicrobial stewardship, management of acute withdrawal syndromes, and neurocritical care. She currently serves as a preceptor for PGY1 Pharmacy and PGY2 Critical Care WakeMed residents, as well as a preceptor for students from UNC and Campbell schools of pharmacy. She also serves as the Research and Projects Coordinator for the residency program. Mollie is a member of the American Society of

Health-System Pharmacists (ASHP), North Carolina Association of Pharmacists (NCAP), the American College of Clinical Pharmacy (ACCP), and the Society of Critical Care Medicine (SCCM).



Shannon Holt, PharmD, BCPS AQ-ID, is the current Infectious Disease and Stewardship Clinical Pharmacy Specialist and Director of PGY1 Pharmacy Residency at WakeMed Health & Hospitals. Shannon's is also in a co-funded faculty position with the UNC Eshelman School of Pharmacy. She is an Assistant Professor of Clinical Education as well as the UNC SOP Wake Region AHEC Co-Director. IN addition, Shannon teaches didactic lectures within the Infectious Diseases elective. Shannon is a graduate of the UNC Eshelman School of Pharmacy. After graduation, she completed a PGY-1 Pharmacy Residency at Duke University Hospital and a PGY2 Specialty Residency in Infectious Disease/Internal Medicine/Academia with Campbell University at Duke University Hospital. Her current research interests include antimicrobial stewardship and improving outcomes in patients with healthcare-associated infections. Shannon is also actively involved in several hospital committees, including Chair for the Antimicrobial Stewardship P&T sub-committee. She also is an active member of American College of Clinical Pharmacy (ACCP) and the Society of Infectious Disease Pharmacists (SIDP).



Cristina Kaifer, PharmD, BCPS, is a current Clinical Staff Pharmacists at WakeMed Health & Hospitals, primarily staffing in the Emergency Department and Medical, Surgical-Trauma, and Neuro Critical Care Units. She is also the Coordinator for the PGY2 Critical Care Residency. She is a graduate of the University of North Carolina Eshelman School of Pharmacy. She completed her PGY1 Pharmacy Practice Residency and PGY2 Critical Care Specialty Residency at WakeMed Health & Hospitals. Throughout her residencies, she completed the Teaching Certificate Program and served as an adjunctive clinical instructor at the UNC Eshelman School of Pharmacy, teaching in the Pharmaceutical Care Lab course. Her residency research focused on agents utilized for procedural sedation in the emergency department and the impact and implementation of a pharmacist driven stress ulcer prophylaxis discontinuation protocol in the ICU. Her current areas of interest include antimicrobial stewardship, emergency medicine, and neurocritical care. She currently serves as a preceptor for WakeMed pharmacy residents and students from UNC Eshelman School of Pharmacy. Cristina is a member of the American College of Clinical Pharmacy (ACCP), and the Society of Critical Care Medicine (SCCM).



Allison Landers, PharmD, BCPS, is the current Clinical Drug Information Specialist at WakeMed Health & Hospitals. Allison received her Doctorate of Pharmacy from the University of North Carolina at Chapel Hill in 2009. She attended the University of North Carolina - Asheville for undergraduate training, where she received a Bachelor of Science in Atmospheric Science. Allison joined WakeMed in 2009 as a clinical staff pharmacist at the Cary campus. While at Cary she chaired the pharmacy Quality and Safety Committee, attended P&T and assisted with several projects. She has been a preceptor for both Campbell and University of North Carolina pharmacy students for their introductory and advanced hospital experiences. Currently Allison is pursuing her Masters in Healthcare Administration through Liberty University.



Erin (Allender) Ledford, PharmD, BCPS-AQ Cardiology, BCCCP, is the Cardiology Critical Care Clinical Specialist and Director of the PGY2 Critical Care Residency at WakeMed. Erin is a graduate of the University Of Kentucky College Of Pharmacy. She completed her Pharmacy Practice and Critical Care Specialty residencies at the University of North Carolina Hospitals. Throughout her residencies, Erin taught a section of the Pharmaceutical Care Lab at the University Of North Carolina Eshelman School Of Pharmacy. To date, she still teaches within the Acute Care and Critical Care Electives. Erin also serves as an instructor for both ACLS and BLS for the American Heart Association. Erin has been nominated to serve in several leadership positions within the Cardiology PRN of the American College of Clinical Pharmacy (ACCP). She is a past-President of the Triangle College of Clinical Pharmacy (TCCP) and a member of the Society of Critical Care Medicine (SCCM). Her current research focuses on the use of insulin in critically ill patients, Anti-Xa-based heparin and enoxaparin nomograms, Code Cart optimization, enhanced recovery after surgery protocols, anticoagulation practices for percutaneous left ventricular assist devices, and antithrombotic and antimicrobial considerations for transcatheter aortic valve replacement. She is also actively involved on several hospital committees that seek to identify and implement various initiatives to optimize patient care while promoting fiscal responsibility.



Chris McGuire, PharmD, BCPS, is currently the Pharmacy Clinical Coordinator for Cardiology at WakeMed. Chris graduated from Butler University College of Pharmacy and Health Sciences in Indianapolis, IN. He completed a PGY1 Pharmacy Practice residency at WJB Dorn Veterans Affairs Medical Center in Columbia, SC, and was the inaugural graduate of WakeMed's PGY2 Cardiology Specialty residency. During his Pharmacy Practice residency he completed the

Academician Preparation Program through the South Carolina College of Pharmacy, and served as a guest lecturer for their Acute Care Elective course. While completing his Cardiology Specialty residency, Chris served as a Teaching Assistant at the University of North Carolina Eshelman School of Pharmacy for both their Cardiology Acute Care Elective and Pharmaceutical Care Lab. After completing his residency, he practiced as a clinical staff pharmacist in cardiology at WakeMed prior to obtaining his current role as clinical coordinator. He currently serves as a preceptor for APPE general cardiology rotations for both Campbell University and UNC schools of pharmacy, and is also a preceptor for an electrophysiology rotation for Cardiology PGY2 residents at WakeMed. Chris leads topic discussions covering a variety of electrophysiology-related subjects, including atrial fibrillation management and implantable cardiac devices. Chris also serves as a Code Blue facilitator for UNC Internal Medicine resident physicians at the WakeMed Medical Simulation Lab. Chris is a member of the American College of Clinical Pharmacy (ACCP) and ACCP's Cardiology PRN.



Chelsie Sanders, PharmD, is currently an emergency medicine clinical pharmacist at WakeMed Health and Hospitals. Chelsie received her Doctor of Pharmacy from Campbell University College of Pharmacy and Health Sciences. She completed a PGY1 Pharmacy Practice Residency at St. Joseph's/Candler Health System in Savannah, GA and a PGY2 Emergency Medicine Pharmacy Residency at CaroMont Health in Gastonia, NC. During her PGY1 she received a teaching certificate through South University in Savannah, GA. She currently serves as the emergency medicine preceptor for PGY1 and 2 residents at WakeMed, as well as Campbell and UNC pharmacy students. Chelsie is a member of the Society of Critical Care Medicine (SCCM), the American College of Clinical Pharmacy (ACCP), the North Carolina Association of Pharmacists (NCAP), and the ACCP Emergency Medicine PRN.



Marie Waddles, PharmD, is the current Ambulatory Care Clinical Specialist at WakeMed Physician Practices Primary Care Clinics and an Assistant Professor of Clinical Education at UNC Eshelman School of Pharmacy. Marie serves the pharmacy school as a preceptor for ambulatory care rotations and the Raleigh Region AHEC Director. She graduated with distinction from the UNC Eshelman School of Pharmacy in 2015. She completed her PGY1 in Ambulatory Pharmacy Practice residency at Virginia Commonwealth University Health in 2016, followed by a PGY2 Ambulatory Care residency at The Ohio State University Wexner Medical Center in 2017. During her PGY1, she completed the Teaching and Learning Certificate program with Virginia Commonwealth School of Pharmacy. During her PGY2, she implemented clinical

pharmacist services in the Circulation and Vascular Clinic. Her resident research focused on the impact of the clinical pharmacist in a 'transitions of care' clinic and the role of a clinical pharmacist in an integrated heart and vascular clinic. Marie's clinical areas of interest include diabetes, hyperlipidemia, hypertension, anticoagulation, heart failure, cardiovascular disease, and population health.



Abbie Crisp Williamson, PharmD, MHA, BCPS, is the current Director of Pharmacy Services. Since joining WakeMed in 2010, she has been in several positions within the Department of Pharmacy such as the Operations Manager at the Raleigh Campus and the systemwide Clinical Manager. She is a native of Raleigh, NC. She received her Doctorate of Pharmacy from the University of North Carolina at Chapel Hill Eshelman School of Pharmacy in 2004 and a Master of Healthcare Administration Program from UNC School of Public Health. She completed a Pharmacy Practice Residency and Critical Care Residency at Wake Forest University Baptist Medical Center in Winston-Salem, NC. Upon completion of residency training, Abbie worked as a surgery/perioperative pharmacist at Duke University Medical Center before transitioning into the Clinical Coordinator of Perioperative Services. Abbie is an active participant in the North Carolina Association of Pharmacists. She has served as the Chair of the NCAP New Practitioner Network, as a member of the NCAP Board of Directors, and currently serves on the Compliance Committee for the North Carolina Physicians Health Program. She lives in Raleigh with her husband and three kids. Abbie Crisp Williamson, PharmD, MHA, BCPS is the Systemwide Clinical Pharmacy Manager. She is a native of Raleigh, NC. She received her Doctorate of Pharmacy from the University of North Carolina at Chapel Hill in 2004 and a Master of Healthcare Administration Program from UNC School of Public Health. She completed a Pharmacy Practice Residency and Critical Care Residency at Wake Forest University Baptist Medical Center in Winston-Salem, NC. Upon completion of residency training, Abbie worked as a surgery/perioperative pharmacist at Duke before transitioning into the Clinical Coordinator of Perioperative Services. Abbie is an active participant in the North Carolina Association of Pharmacists. She has served as the Chair of the NCAP New Practitioner Network, as a member of the NCAP Board of Directors, and is currently the Chair of the North Carolina Recovery Network Board of Directors. She lives in Raleigh with her husband, Pier, daughter Reid, and son Ben.



Rhonda Zillmer, PharmD, is the current Medication Safety Officer for WakeMed Health and Hospitals system in Raleigh, North Carolina and serves as preceptor for the PGY1 Medication Safety Rotation. In this role, Rhonda is devoted to ensuring medication safety and compliance with regulatory standards throughout the entire WakeMed. She received her Doctor of Pharmacy degree from the University of Georgia (UGA) School of pharmacy and she completed a pharmacy practice residency at The Children's Hospital in Denver, Colorado. In 2003, Rhonda joined WakeMed Health and Hospital as a pediatric clinical specialist and in 2009 accepted the position of clinical coordinator. As the clinical coordinator for Women and Children's services, Rhonda focused on extending clinical pharmacy services to the new Children's hospital as well as supervising daily operations of the pediatric satellite pharmacy. From 2016 to 2018 Rhonda served as the Pharmacy Manager at WakeMed North Family & Women's Hospital in Raleigh, 61 bed community hospital. She managed day to day pharmacy operations including distributive, clinical services, and regulatory requirements. She is an active member of ASHP and has served on the Pharmacy Technician and Support Services Section Advisory Group for the past two years. Rhonda is currently enrolled in the Masters of Business Administration program at Meredith College in Raleigh.