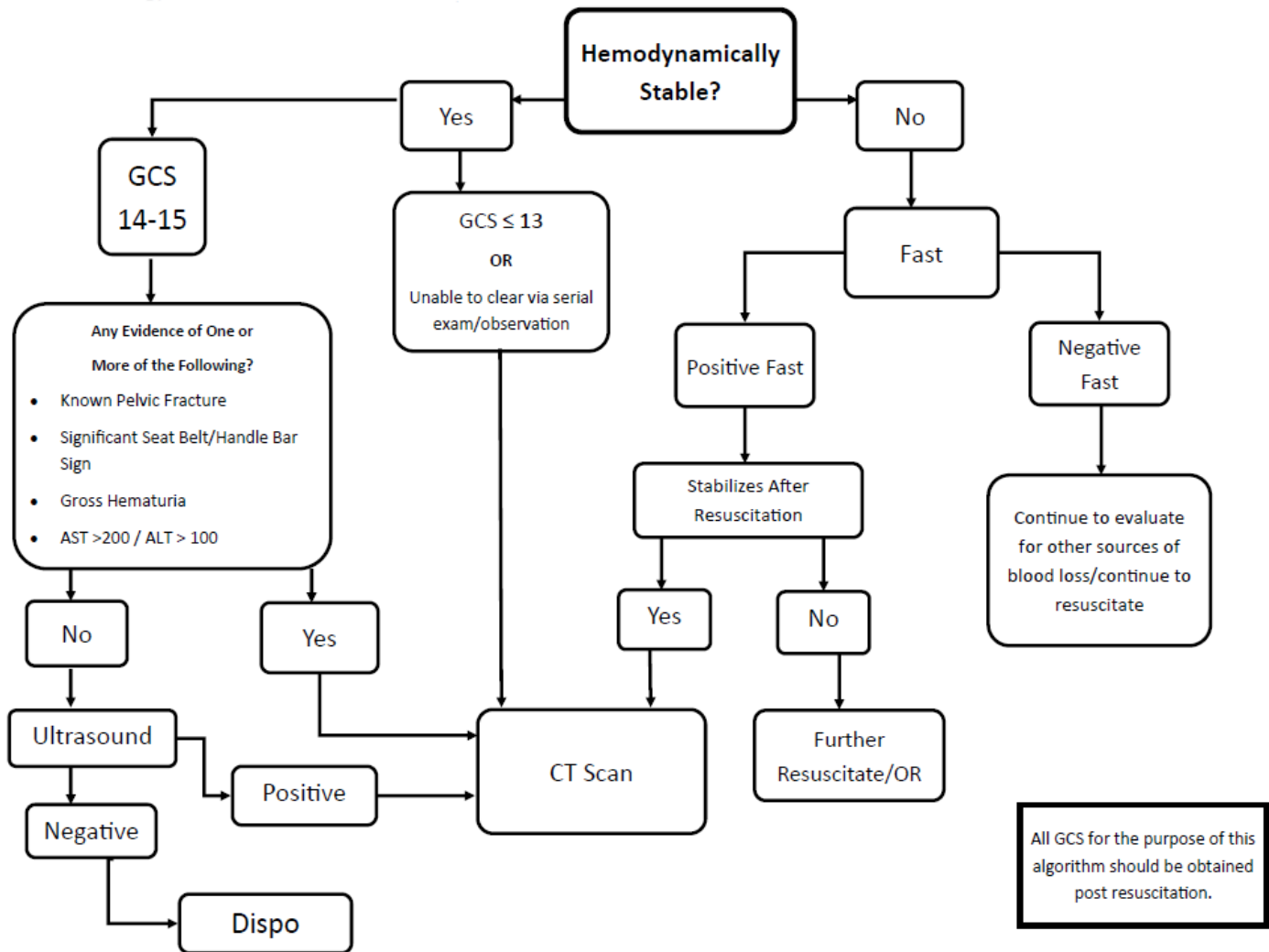


WHO SHOULD READ THIS PROCEDURE:

This procedure shall be read by WPP Surgery and all practitioners caring for trauma patients.



REFERENCES:

1. M. Gaffley, L. P. Neff, L. M. Sieren et al., Evaluation of an evidence-based guideline to reduce CT use in the assessment of blunt pediatric abdominal trauma. *Journal of Pediatric Surgery*.