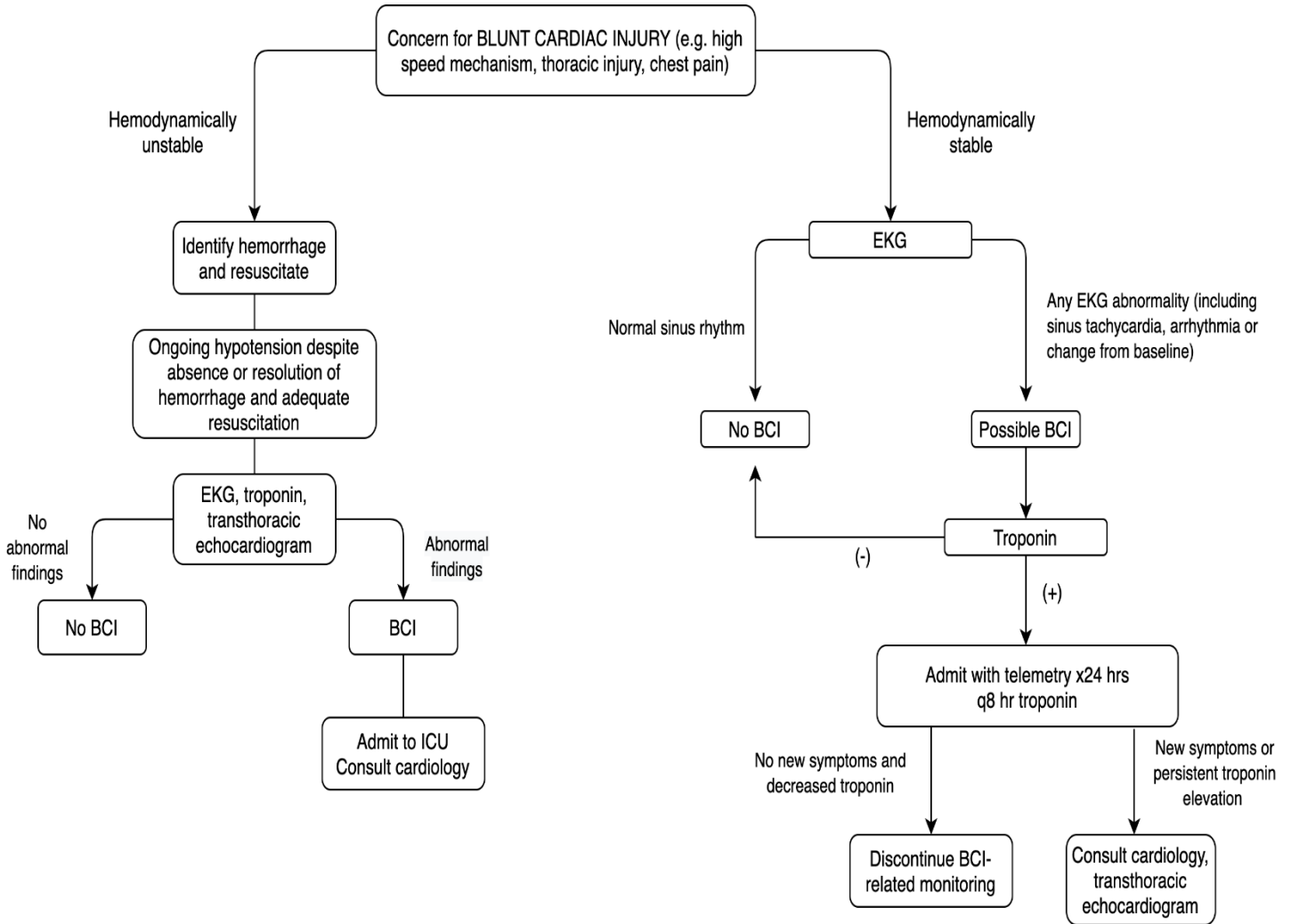


PURPOSE: Define best practice for managing blunt cardiac injury.
CONTRIBUTING TEAMS: Trauma Surgery, Emergency Medicine



DEFINITIONS:

TERM	DEFINITION
BCI	Blunt Cardiac Injury

Parent Policy: None	Title:	Standard Operating Procedure
	Workup and Management of Blunt Cardiac Injury	Effective Date: 03/23/2021

References:

1. Mattox KL, Flint LM, Carrico CJ, Grover F, Meredith J, Morris J, Rice C, Richardson D, Rodriquez A, Trunkey DD. Blunt cardiac injury. J Trauma. 1992 Nov;33(5):649-50.
2. Schultz JM, Trunkey DD. Blunt cardiac injury. Crit Care Clin. 2004 Jan;20(1):57-70.
3. Nagy KK, Krosner SM, Roberts RR, Joseph KT, Smith RF, Barrett J. Determining which patients require evaluation for blunt cardiac injury following blunt chest trauma. World J Surg. 2001 Jan;25(1):108-11.
4. van Wijngaarden MH, Karmy-Jones R, Talwar MK, Simonetti V. Blunt cardiac injury: a 10 year institutional review. Injury. 1997 Jan;28(1):51-5.
5. Collins JN, Cole FJ, Weireter LJ, Riblet JL, Britt LD. The usefulness of serum troponin levels in evaluating cardiac injury. Am Surg. 2001 Sep;67(9):821-5; discussion 825-6.
6. Jackson L, Stewart A. Best evidence topic report. Use of troponin for the diagnosis of myocardial contusion after blunt chest trauma. Emerg Med J. 2005 Mar;22(3):193-5.
7. Rajan GP, Zellweger R. Cardiac troponin I as a predictor of arrhythmia and ventricular dysfunction in trauma patients with myocardial contusion. J Trauma. 2004 Oct;57(4):801-8; discussion 808.
8. Biffi WL, Moore FA, Moore EE, Sauaia A, Read RA, Burch JM. Cardiac enzymes are irrelevant in the patient with suspected myocardial contusion. Am J Surg. 1994 Dec;168(6):523-7; discussion 527-8.
9. Clancy K, Velopulos C, Bilaniuk JW, Collier B, Crowley W, Kurek S, Lui F, Nayduch D, Sangosanya A, Tucker B, Haut ER; Eastern Association for the Surgery of Trauma. Screening for blunt cardiac injury: an Eastern Association for the Surgery of Trauma practice management guideline. J Trauma Acute Care Surg. 2012 Nov;73(5 Suppl 4):S301-6.